



POWERMAST WALL-TIED SYSTEM

With a working height up to 200 feet (60.96 m), the PowerMast wall-tied system offers stable access at the range and scale of traditional scaffolds, but with the quick ascent ability of mast climbers.

EFFICIENT

- 20-40 FPM mast climbing speed
- Height adjustable while in use
- Up to 1,500 lb (680 kg) weight capacity
- Custom configurations available for unique applications

FAST SETUP, FAST ACCESS

- 15-minute twin mast setup*
- Erected from ground up, unlike swing stage
- Powered by 1/2 in. 8 amp electric drill

EASY TRANSPORT

- Easily fits in back of truck or van
- Compact and stable base plate
- Stackable aluminum mast sections

*Depending on configuration.



This image is shown with a modular deck, which is not included with the system.

>> DID YOU KNOW?

ReechCraft's PowerMast is also available in a freestanding option! Visit powermast.reechcraft.com for more details and information!



» POWERMAST SPECIFICATIONS

GENERAL SPECIFICATIONS

Platform Support Dimensions (Twin)	Up to 30 in. (762 mm) Wide Platform Deck
Minimum/Maximum Platform Length (Twin)	Any within 1500 lb (680 kg) System Capacity
Platform Dimensions (Single)	30 in. (762 mm) x 6.5 ft (1.98 m)
Maximum Platform Height	194 ft (59.1 m)
Maximum Working Height	200 ft (60.96 m)
Maximum Load Capacity (Twin)	1500 lb (680 kg) (750 lb per Mast)
Tie Spacing	15 ft (4.57 m)
Maximum Climbing Speed	25 ft/min (7.6 m/min)
Drive System	120:1 Clutch Protected Transmission
Operating System	0.5 in. (13 mm) 8 amp Minimum Drill Motor
Required Voltage	110 VAC Single Phase
Safety Devices	Lock Lever, Overload Clutch, Overspeed Brake
Climbing Unit Weight	65 lbs (29 kg)
32 in. (813 mm) Mast Weight	19 lbs (9 kg)
5 ft (1.52 m) Mast Weight	32 lbs (15 kg)
Tie Weight	7 lbs (3 kg)
Tie Pullout Force	750 lbs (340 kg) per Tie
Mast Section	5 in. (127 mm) x 6 in. (152 mm) Aluminum with Galvanized Steel Track
Mast Connection Type	Interference Locking Cam
Base Plate Dimension	10 in. (254 mm) x 10 in. (254 mm) Steel/Rubber
Total Weight on Base Plate	2150 lbs (975 kg)
Surface Area of Base Plate	100 sq. in. (645 sq. cm)
Surface Pressure from Base Plate	21.5 lbs/sq. in. (1.5 kg/sq. cm)

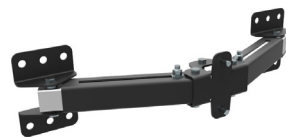
Note: Specifications subject to change without notice.

ACCESSORIES + FEATURES



CLIMBING UNIT ▴

The climbing unit features a lock lever, an overspeed brake to automatically stop the platform in the event of overspeed, and a gearbox with an overload clutch. It is drill operated to eliminate electrical components.



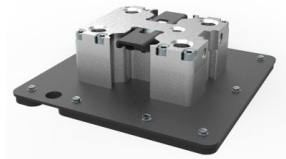
ADJUSTABLE TIE ▴

The tie provides a wide variety of attachment options for the PowerMast system and allows the PowerMast to adapt quickly to various wall types.



PLATFORM SUPPORT ▴

Fastening to the climbing unit with four quick-locking pins, the adjustable platform support accommodates most platforms and rail systems.



BASE FOOT ▴

The base foot uses the same quick connection as the masts, can be anchored to the ground, and provides a bottom stop for the climbing unit.



▴ REECHCRAFT.COM 888-600-6160 MADE IN THE USA
4028361

» TWIN MAST WALL-TIED SYSTEM REQUIRED COMPONENTS

HEIGHT	20 ft (6.1 m)	40 ft (12.19 m)	60 ft (18.29 m)	80 ft (24.38 m)	100 ft (30.48 m)	120 ft (36.58 m)	140 ft (42.67 m)	160 ft (48.77 m)	180 ft (54.86 m)	200 ft (60.96 m)
COMPONENT	QTY	QTY	QTY	QTY	QTY	QTY	QTY	QTY	QTY	QTY
Climbing Unit	2	2	2	2	2	2	2	2	2	2
Platform Support	2	2	2	2	2	2	2	2	2	2
Adjustable Tie	4	6	8	12	14	16	20	24	28	32
5 ft (1.52 m) Mast	8	16	24	36	40	48	56	64	72	80
32 in. (813 mm) Mast	0	0	0	0	0	0	0	0	0	0
Base Foot	2	2	2	2	2	2	2	2	2	2

Note: For a single mast system, use half the quantity of each component. Specifications subject to change without notice.